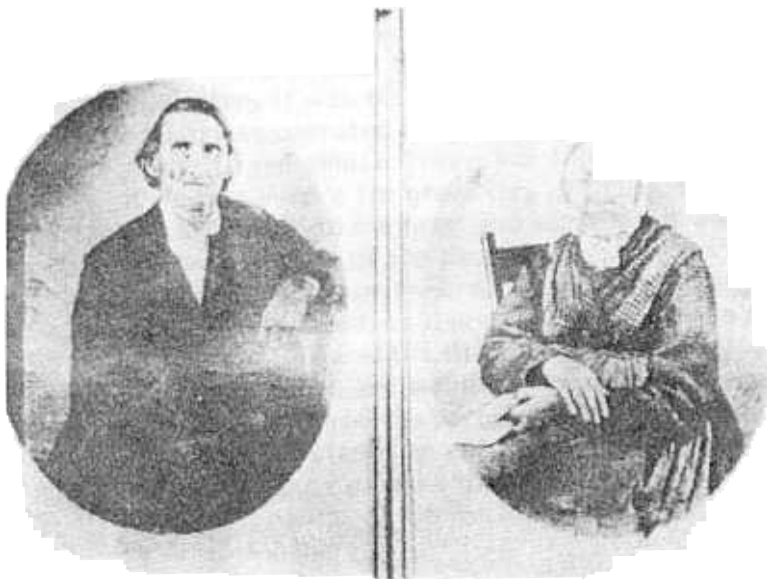


JOAB WARD'S CABIN AT RIDGEVILLE



Joab Ward, one of the first early settlers, built this cabin in 1819 on the south side of the Mississinewa river near where the old railroad bridge crosses it. The cabin was the homestead of several generations and survived nearly 150 years.

Mr. Ward was in the business of building "flat boats" at this location for sale to farmers who shipped their produce down the river to bigger markets on the Wabash. After selling their products, and the boat, the farmer would begin his long trek back home again on foot through the forested wilderness.



Joab and his wife, Amy (Graves) Ward, survived the rigors of clearing the land, building their home and raising crops without the help of neighbors or friends in this vast wilderness. And the forests furnished a plentiful supply of the best types of woods for construction and a bounty of wild game for sustenance so the Wards remained and reared their family on this site. The seeds, of the settlement to become Ridgeville, had been planted.